

## DIVERSIFIED EXPLORATION COMPANY

TomaGold Corporation (TSXV: LOT) (OTCQB: TOGOF) is a Canadian mineral exploration company engaged in the acquisition, assessment, exploration and development of gold, copper, rare earth elements and lithium projects.

### MAIN PROJECTS

#### CHIBOUGAMAU MINING CAMP (QC)

- Owns 100% of Obalski past producing Au-Ag-Cu project
- Owns 3 projects adjacent to 433,500 oz Monster Lake deposit

#### JAMES BAY (QC)

- Owns 100% of Star Lake REE project
- Owns 100% of Brisk Extension Li-REE project

#### RED LAKE MINING CAMP (ON)

- Owns 24.5% of Baird JV with Evolution Mining and New Gold

### SOLID TEAM & STAKEHOLDERS

- Experienced Management, Board and Advisory committee
- Solid technical team with three geologists/engineers
- Major shareholders include IAMGOLD and Quebec funds

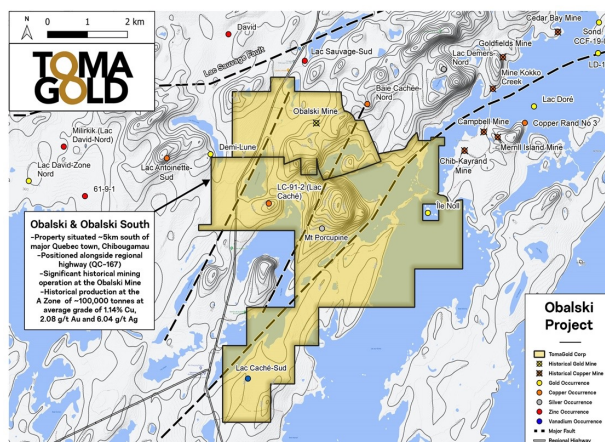
### WELL-FUNDED COMPANY

- Over \$2 million in cash and short-term investments
- Funds to be mainly allocated to the development of TomaGold's projects located near known mining camps, which hold significant exploration potential

### OBALSKI

#### PAST PRODUCING GOLD-SILVER-COPPER MINE

- TomaGold owns 100% of the Obalski property, located south of Chibougamau, Quebec, a known mining camp and favourable mining jurisdiction
- The Obalski property is comprised of 74 claims covering 2 724 hectares (27 km<sup>2</sup>), one mining concession and hosts seven separate mineralized zones, one 85-metre shaft and two ramps
- In 1964, United Obalski Mining Co. Ltd. mined 100,273 tons grading 2.08 g/t Au, 6.04 g/t Ag and 1.14% Cu
- 542 holes were drilled (including underground workings) on the property for a total of more than 78,000 metres. Most of the historical drilling was shallow drilling



## STAR LAKE NEW REE PROJECT

### LARGEST LAND POSITION IN THE AREA

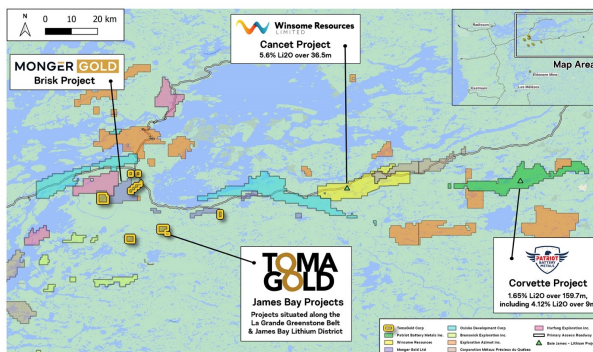
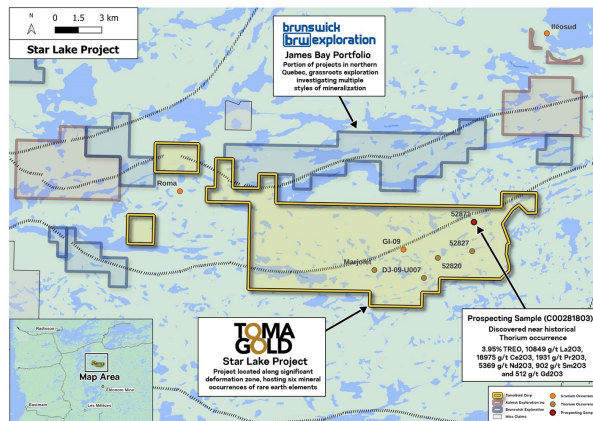
- 214 claims (10,906 ha or 109 km<sup>2</sup>)

### MULTI-MINERAL POTENTIAL

- Historical work and compilation have shown showings of: Uranium/Thorium, Copper, Nickel, Rare Earth Elements and Zirconium

### HIGH-GRADE TREO DISCOVERY

- Grab sample of 3.95% TREO and historical grab samples of 0.5% TREO (52871), 0.4% TREO (52820) and 0.2% TREO (52827)



## BRISK EXTENSION NEW LITHIUM/REE PROJECT

### PRIME LOCATION

- 107 claims (5,487 ha or 55 km<sup>2</sup>) located near Zones 1, 2, 3 and 6 of Monger Gold's Brisk project, and on the same geological corridor as the Cancet (5.6% Li<sub>2</sub>O over 36.5 m) and Corvette (1.65% Li<sub>2</sub>O over 159.7 m) projects, held by Winsome Resources and Patriot Battery Metals respectively, further east.

## NEXT STEPS PROJECTING AN ACTIVE 2023 YEAR

### Obalski (Gold-Copper-Silver)

- Pending drilling results from the 3,000-metre drilling program
- Additional borehole IP SURVEY (currently underway)
- Additional metallurgical and mineralogy analysis (currently underway)
- Additional drilling planned on newly-generated targets, after drill and borehole IP results

### Star Lake (New REE Property)

- Prospection and sampling program (Spring/Summer of 2023)

### Brisk Extension (New Lithium/REE Property)

- Prospection and sampling program (Spring/Summer of 2023)

### Potential Project Acquisitions

- Very favourable market environment for metals
- Gold / Copper / REE / Lithium

## CORPORATE INFORMATION CAPITAL STRUCTURE

Shares outstanding	179.7 million
Market capitalization	\$CA 5.4 million
Share price (as of March 15, 2023)	\$CA 0.03
Institutional ownership	55% (Asia, Europe and NA), incl. 15.5% by IAMGOLD

## LEADERSHIP BOARD OF DIRECTORS

David Grondin, President & CEO  
Michel E. Labrousse  
Jean-Sébastien Jacquetin  
Caitlin Jeffs  
Albert Contardi  
Wanda Cutler